

Installation Guide – Adjustable pedestal ECO -Line

The ECO-Line series consists of four different height adjustable base pedestals.



The adjustable pedestals ECO-Line:

 <p>Adjustable pedestals ECO S</p>	<p>Assembly height: 0"63/64 - 1"37/64 (25-40 mm)</p>
 <p>Adjustable pedestals ECO M</p>	<p>Assembly height: 1"3/8 - 2"9/16 (35-65 mm)</p>
 <p>Adjustable pedestals ECO L</p>	<p>Assembly height: 2"9/16 - 5"1/8 (65-130 mm)</p>
 <p>Adjustable pedestals PRO XL</p>	<p>Assembly height: 5"1/8 - 7"51/64 (130-198 mm)</p>

The adjustable pedestals and the components have a recommended load-bearing capacity of 494 lbf (2,2 KN / pedestal).

Installation Guide – Adjustable pedestal ECO -Line

In order to increase the bearing surface of the ECO S, the adjusting pedestal can be combined with a suitable lower part.

 <p>Bottom Part ECO S</p>	<p>The assembly height is increased by 2mm.</p>
 <p>Nivello 2.0</p>	<p>Versatile slope adjustment: Minimum slope: 0% Maximum slope: 10% Slope can be adjusted in steps of 0,5%.</p>

To extend our ECO M ; ECO L and ECO XL pedestal to the full height, turn the upper part of the head clockwise and the lower counterclockwise. If the upper part of the head is already held in position by a profile, the height can be adjusted by rotating the lower head part.

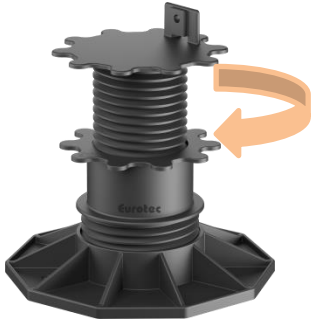
In order to ensure a material separation between floor covering and adjustable pedestal, we recommend the use of roof protection cork under the adjustable pedestal.



Roof protection cork

Installation Guide – Adjustable pedestal ECO -Line

By turning it out, the adjustable pedestals can be adjusted to the exact right height.



In order to increase the bearing surface of the ECO S, the adjustable pedestals can be combined with a suitable bottom part. The assembly height is increased by 2mm.



ECO S

The ECO S is simply clicked on the bottom part.



Bottom Part ECO S

Installation Guide – Adjustable pedestal ECO -Line

The adjustable pedestals ECO-Line are suitable for substructures made of aluminum, wood and composite. The beam width of the proline pedestals is max. 2"3/4 inch (70 mm) for the ECO S and 3"1/2 inch (90 mm) for ECO M ; L and XL. All aluminum system profiles EVO; EVO-Slim and Eveco can be attached to the ECO-Line adjustable pedestals with screws



Aluminium system profile EVO



Aluminium System profile EVO-Slim



Eveco aluminium system profile

To compensate for a slope or unevenness in a laying area, we recommend the use of the Nivello 2.0 with the adjustable pedestals of the ECO-Line.

Installation Guide – Adjustable pedestal ECO -Line



	ECO S	
Slope	Inches	mm
0% - 1%	0"25/64 – 0"13/32	10.00 – 10.25
2% - 3%	0"13/32 – 0"27/64	10.50 – 10.75
4% - 5%	0"7/16	11.00 – 11.25
6% - 7%	0"29/64 – 0"15/32	11.50 – 11.75
8% - 9%	0"15/32 – 0"31/64	12.00 – 12.25
10%	0"1/2	12.75

	ECO M; L; XL	
Slope	Inches	mm
0% - 1%	0"5/8 – 0"41/64	16.00 – 16.25
2% - 3%	0"21/32	16.50 – 16.75
4% - 5%	0"43/64	17.00 – 17.25
6% - 7%	0"11/16 – 0"45/64	17.50 – 17.75
8% - 9%	0"45/64 – 0"47/64	18.00 – 18.50
10%	0"3/4	19.00

The table shows the installation height of the adjustable pedestals of the ECO-Line.

Installation Guide – Adjustable pedestal ECO -Line

To adjust the desired slope, the lever must be pulled upwards at the edge of the Nivello 2.0. Now you can set the desired slope in 0.5% steps. The lever locks in the respective position. It is possible to secure the lever with a screw in the Nivello 2.0.



The installation height (see tables) must be taken into account when installing the system.